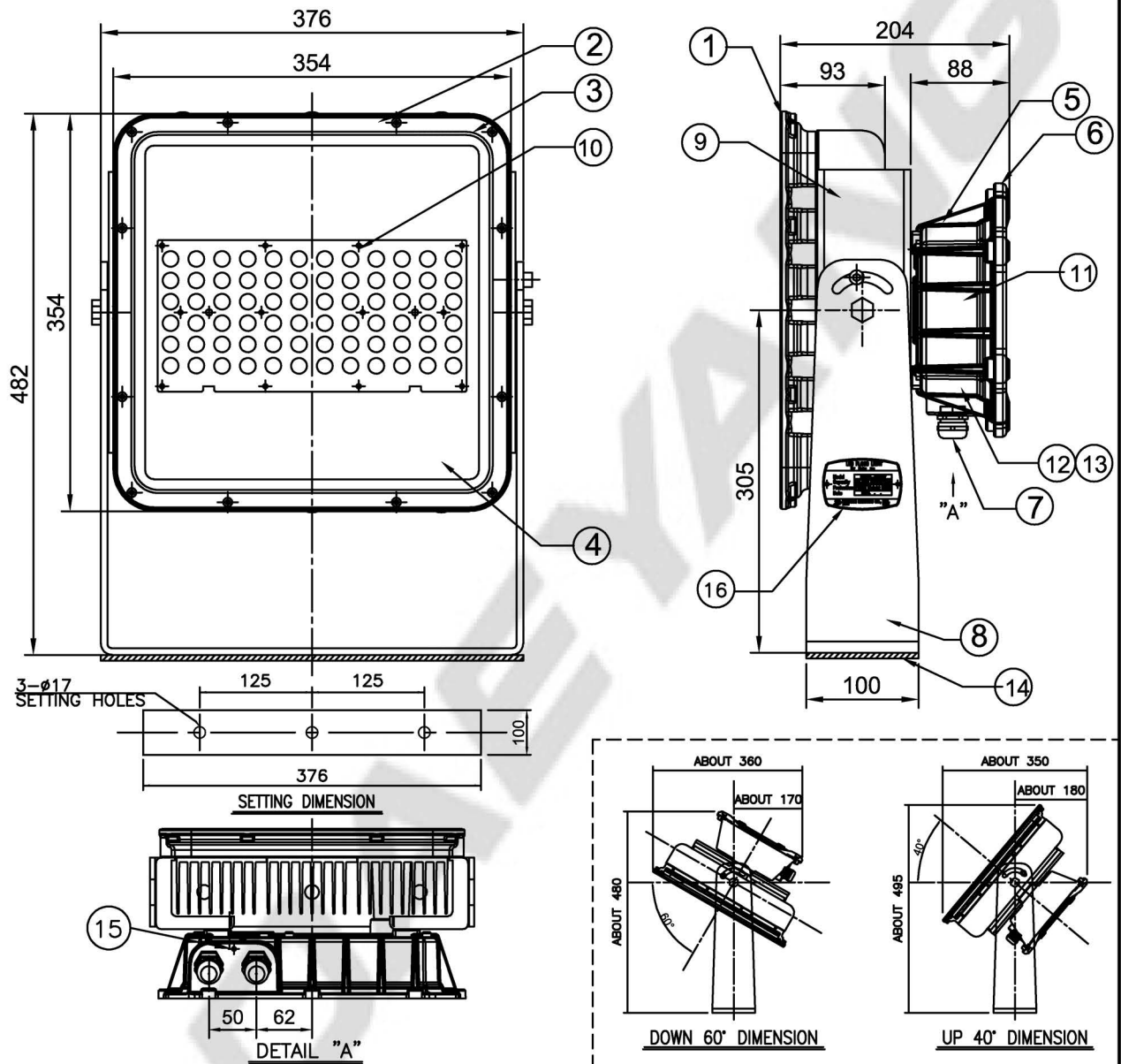


CAPACITY	SYMBOL/SERIAL NO.	CIRCUIT DIAGRAM
AC100-240V, 50/60Hz		
125W		



16	NAME PLATE	STAINLESS STEEL 316L	1		8	ARM	STAINLESS STEEL 316L	1	
15	OUTSIDE EARTH BOLT	STAINLESS STEEL 316L	1	M5	7	CABLE GLAND(R25M)	BRASS	2	ø9~ø17
14	ANTI-VIBRATION PACKING	C.R.	1	5mm	6	LED driver CASE COVER	ALUMINIUM	1	
13	INSIDE EARTH BOLT	STAINLESS STEEL 304	1		5	LED driver CASE	ALUMINIUM	1	
12	TERMINAL BLOCK	-	1		4	FRONT GLASS	GLASS	1	
11	LED driver	-	1		3	GLOBE PACKING	SILICONE	1	
10	LED module	-	1	6,000K	2	GLOBE FRAME	STAINLESS STEEL 316L	1	
9	BODY BRACKET	STAINLESS STEEL 316L	2		1	BODY	ALUMINIUM	1	
NO	NAME OF PARTS	MATERIAL	Q'TY	REMARKS	NO	NAME OF PARTS	MATERIAL	Q'TY	REMARKS

APPROVED	O. J. KWON	UNIT	MM	TITLE: LED FLOOD LIGHT FOR MARINE USE					
CHECKED	W. J. JI	SCALE	N/S						
DESIGN	J. C. LEE	COLOR	N-9.3						
DATE	2018.12.17	IP	67						
				MODEL NO.	PF125L-550AWCFNC60(R25M)	WEIGHT	21 Kg		
				DWG NO.	LR5190009	SHEET NO.	31		